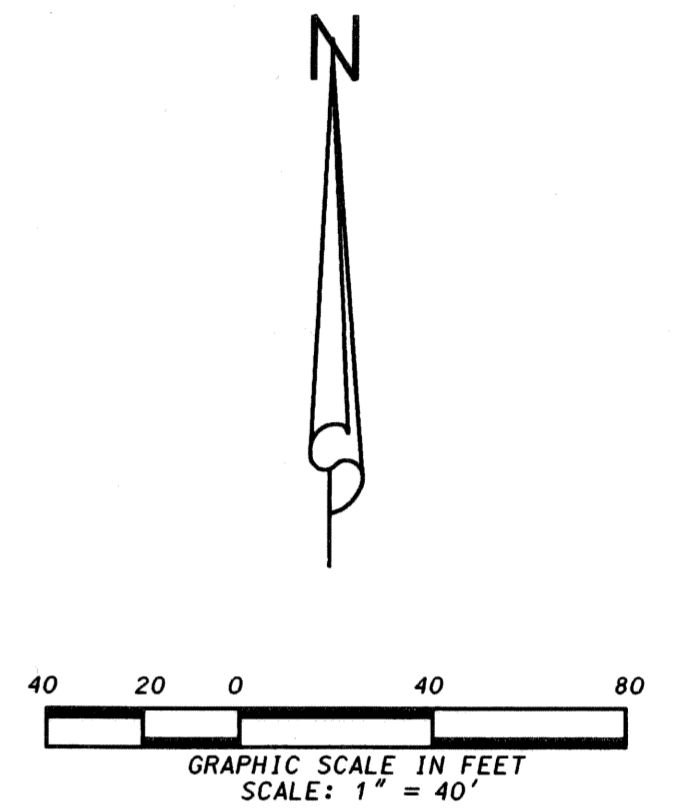
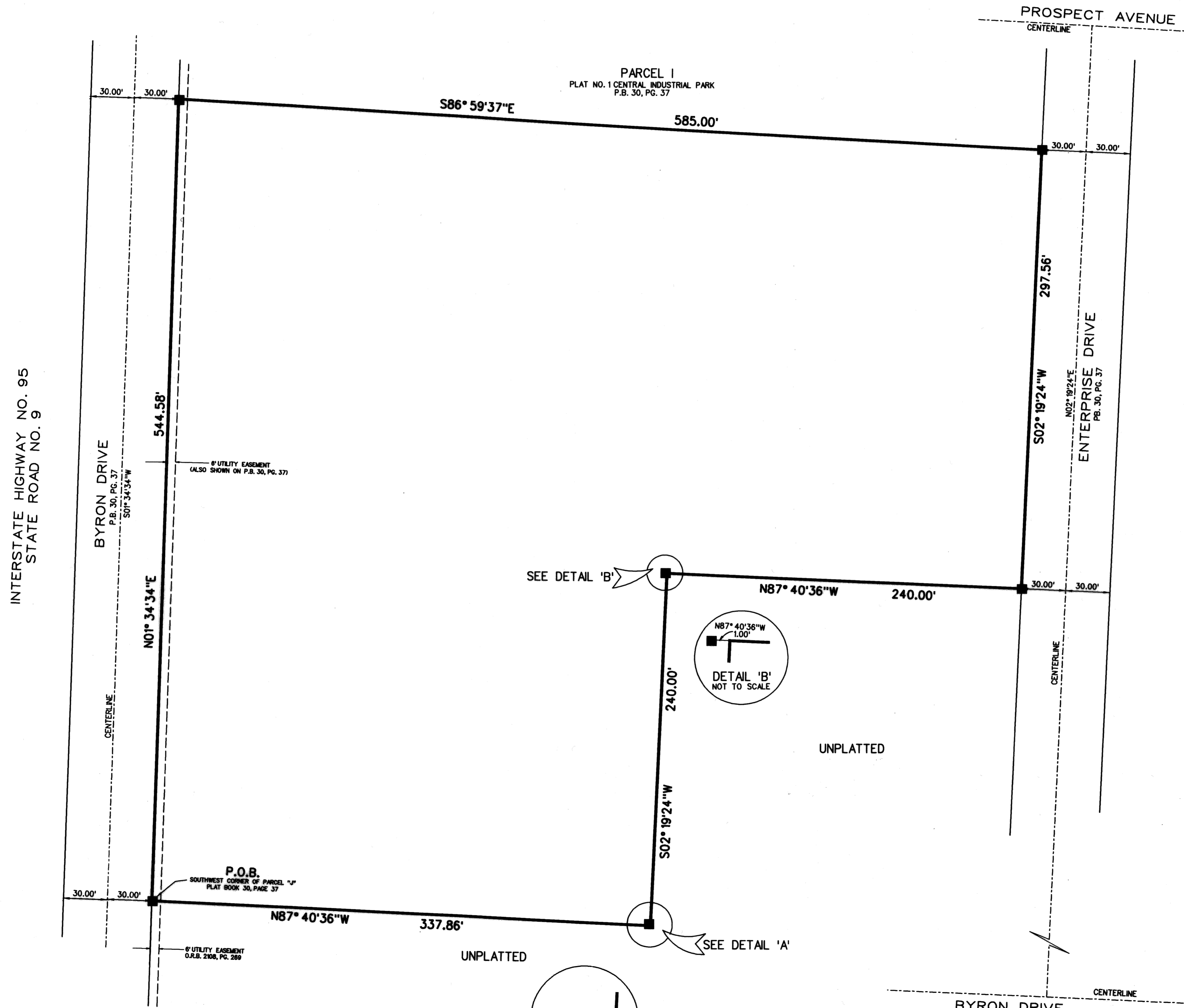


SUNCREST WAREHOUSE

BEING A REPLAT OF PARCEL "J" AND A PORTION OF PARCEL "I", AS SHOWN ON PLAT NO. 1 CENTRAL INDUSTRIAL PARK, RECORDED IN PLAT BOOK 30, PAGE 37, PUBLIC RECORDS OF PALM BEACH COUNTY, FLORIDA, SITUATE IN SECTION 30, TOWNSHIP 42 SOUTH, RANGE 43 EAST, CITY OF RIVIERA BEACH, PALM BEACH COUNTY, FLORIDA

JULY, 2005

SHEET 2 OF 2



ABBREVIATIONS:

- O.R.B. - OFFICIAL RECORD BOOK
- P.O.B. - POINT OF BEGINNING
- P.B. - PLAT BOOK
- PG. - PAGE

LIDBERG LAND SURVEYING, INC.

675 West Indiantown Road, Suite 200, Jupiter, Florida 33458 TEL. 561-748-8454

CAD: K:\UST \ 304243 \ 30-37 \ 1344306 \ 1344306.DGN			
REF.			
FLD.	FB.	PG.	JOB 04-134-306
OFF. L.J.C.			DATE 02/03/05
CKD. D.C.L.	SHEET 2	OF 2	DWG. D04-134P